

King Sejong Institute Foundation

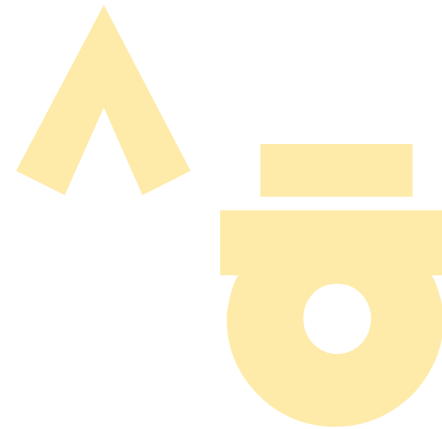


- I King Sejong Institute Foundation
- II Operation of King Sejong Institute
- III Education of King Sejong Institute
- IV Educational Content of King Sejong Institute Foundation

The King Sejong Institute Foundation (KSIF) is a public institution that operates under the auspices of the Republic of Korea (ROK) Ministry of Culture, Sports and Tourism, which supervises Korean language education and promotion of Korean culture overseas.

* Pursuant to Article 19-2 (Establishment of King Sejong Institute Foundation) of the Framework Act on Korean Language

As a national institution dedicated to international cultural exchanges, the KSIF connects the world through Korean language and culture, taking the lead in making the world a better place.



Lee Haiyoung,
President of King Sejong Institute Foundation

이희영



4 ABOUT THE KSIF

5 ORGANIZATION

6 KSIF PROJECTS
AT A GLANCE

8 KSIs AROUND THE WORLD

10 STATISTICS

12 PUBLIC RELATIONS

14 CONTRIBUTIONS

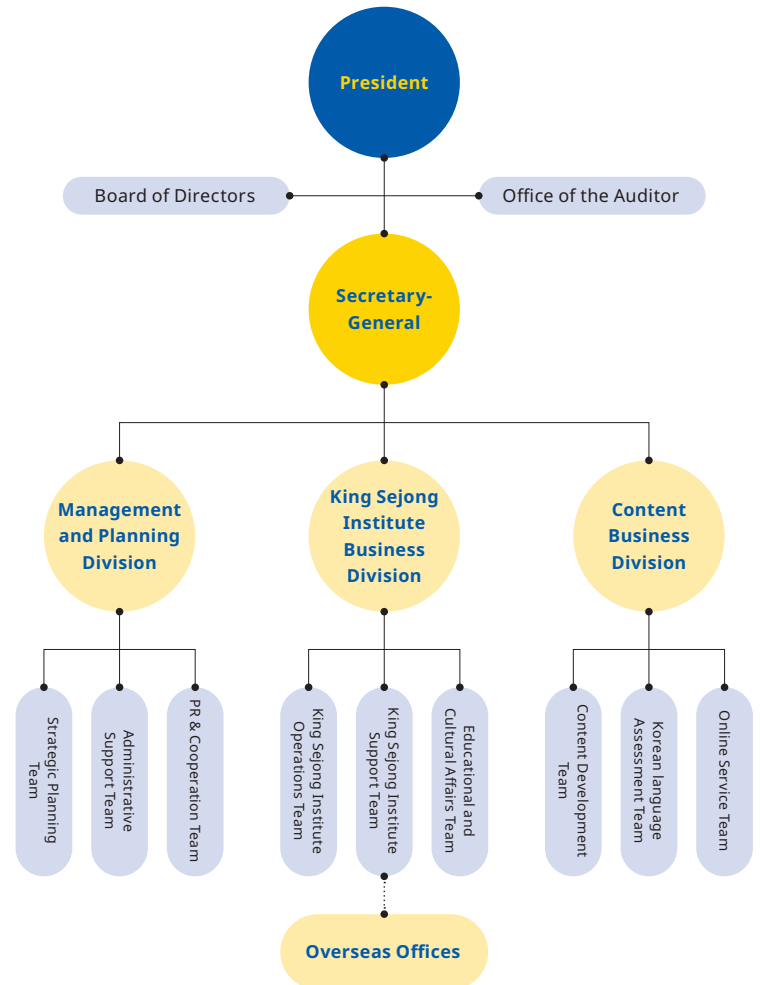
The KSIF promotes the spread of Korean language and culture.

The KSIF is a public institution that operates under the auspices of the Ministry of Culture, Sports and Tourism. It is responsible for establishing and supporting King Sejong Institutes, a major brand of the KSIF that promotes the spread of Korean language and culture. Pursuant to Article 19-2 of the Framework Act on Korean Language, the KSIF supervises all programs designed to promote Korean language and culture overseas.



The KSIF is realizing the dreams of King Sejong.

All members of the KSIF are determined to actively respond to a demand for learning Korean language and culture overseas, and to provide necessary support to help KSIs spread Korean language and culture all over the world.



The KSIF operates with various roles and responsibilities.

The KSIF has been engaging in a variety of projects in an efficient manner as the central organization responsible for the communication of Korean language and culture at home and abroad.

Designation and Operation of KSIs

- Designate new KSIs
- Support the operation of KSIs
 - Administrative and budgeting education for the operation of KSIs
 - Specialized programs according to each KSI
- Evaluate the operation of KSIs and conduct on-site inspections



Reinforcement of Teacher Expertise

- Dispatch Korean language teachers overseas
- Operate training programs for KSI teachers
- Support local KSI teacher at KSIs to attain degree in Korean education
- Provide consulting services on Korean education to local KSI teacher who are not Korean nationals
- Operate KSIF teacher training centers



Promotion of Korean Cultural Exchanges

- Operate the Sejong Culture Academy
- Dispatch KSI culture interns
- Hold Korean Cultural Experience Program for KSI students
- Grant KSIF scholarship to selected students



Support for Korean Language Education

- Develop and supply basic KSI curriculum
- Develop and supply special KSI curriculum
- Develop and supply online KSI curriculum
- Develop and supply questionnaires to evaluate the level of achievement by course
- Develop and supply Korean language learning and teaching materials
- Develop and execute Sejong Korean language Assessment (SKA)



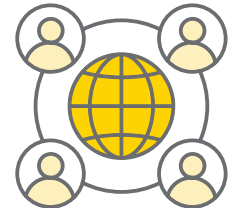
Online Learning Support

- Online KSI (www.iksi.or.kr)
 - An online learning platform where you can access KSI lectures on Korean language and culture
- Nuri Sejonghagdang (nuri.iksi.or.kr)
 - A portal website that provides various materials for Korean language students and teachers
- Metaverse KSI (ksif.zep.site)
- Develop and supply smart learning content



Global Networking

- World Korean Educator Conference
- Hold workshops in different locations of KSIs



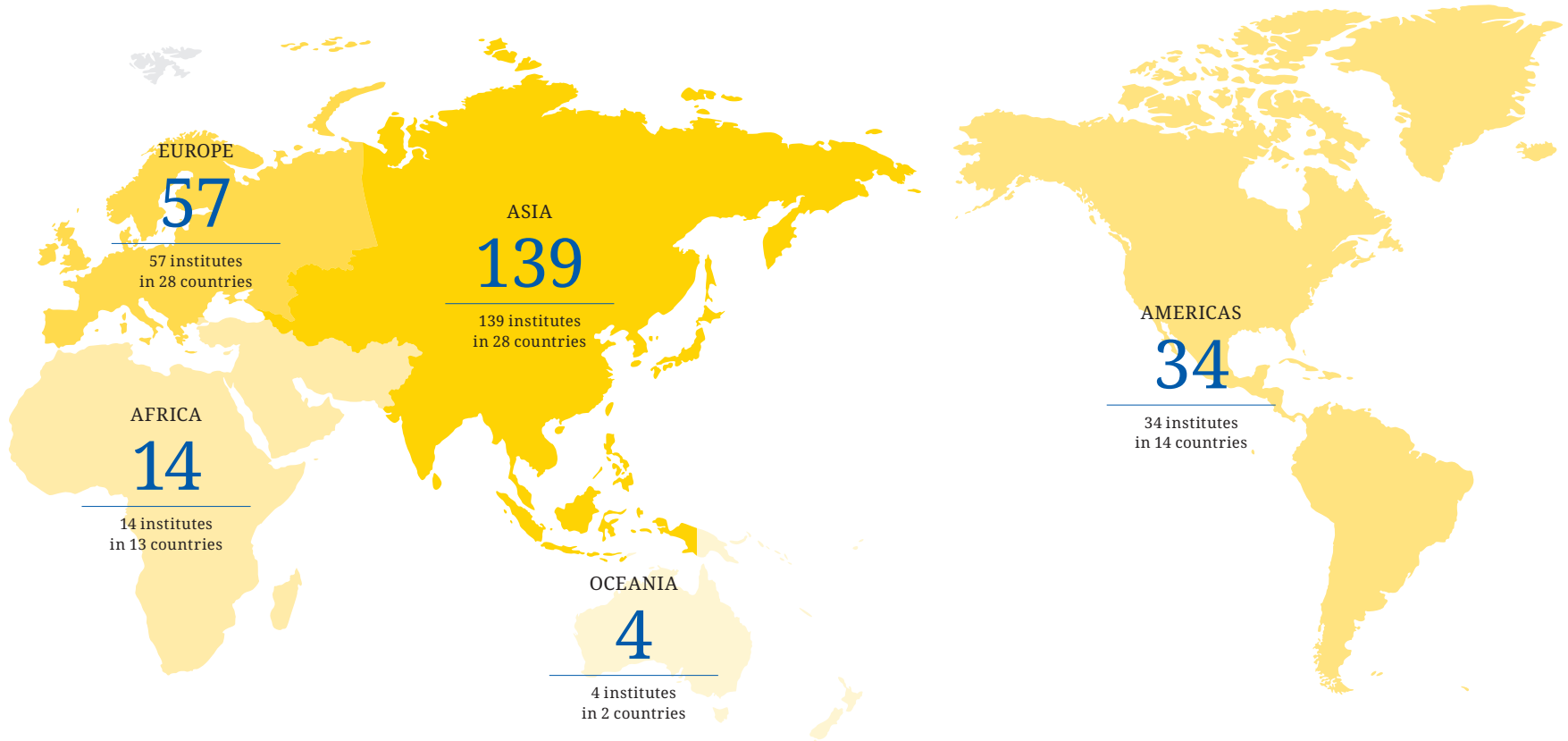
Promotion and Sponsorship

- Promote KSIs
- Communicate and cooperate with other organizations
- Publish periodicals
- Issue press releases and monitor the media
- Attract sponsors and manage sponsor programs



The KSIF has a global network of 248 institutes in 85 countries.

(as of Jun. 2023)

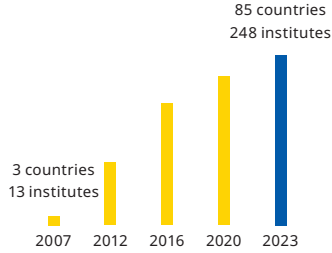


- EUROPE** Denmark(1), Germany(3), Latvia(1), Russia(11), Romania(1), Luxembourg(1), Lithuania(2), Belgium(2), Bulgaria(1), Serbia(1), Sweden(1), Spain(3), Slovakia(1), Slovenia(1), Iceland(1), Estonia(1), UK(4), Austria(1), Ukraine(1), Italy(1), Czechia(1), Croatia(2), Türkiye(4), Portugal(1), Poland(2), France(4), Finland(1), Hungary(3)
- ASIA** Republic of Korea(1), Laos(2), Malaysia(3), Mongolia(4), Myanmar(1), Bahrain(1), Bangladesh(2), Vietnam(23), Saudi Arabia(1), UAE(4), Azerbaijan(2), Jordan(1), Uzbekistan(7), Iran(2), India(7), Indonesia(11), Japan(16), China(21), Kazakhstan(3), Cambodia(5), Kuwait(1), Kyrgyzstan(5), Tajikistan(2), Thailand(5), Turkmenistan(1), Pakistan(1), Palestine(1), Philippines(6)
- AFRICA** Nigeria(1), South Africa(1), Madagascar(1), Malawi(1), Morocco(2), Botswana(1), Eswatini(1), Uganda(1), Egypt(1), Kenya(1), Cote d'Ivoire(1), Tanzania(1), Tunisia(1)
- OCEANIA** New Zealand (1), Australia (3)
- AMERICAS** Mexico(2), US(14), Bolivia(1), Brazil(5), Argentina(1), Haiti(1), Ecuador(1), El Salvador(1), Uruguay(1), Chile(1), Canada(3), Colombia(1), Paraguay(1), Peru(1)

King Sejong Institutes (as of Jun. 2023)



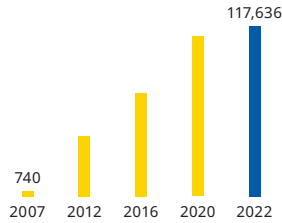
85 countries
248 institutes



KSI Students by Year (as of Dec. 2022)



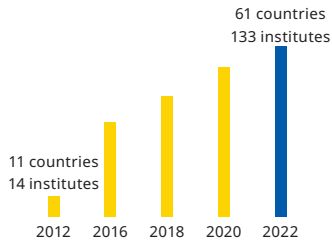
117,636 students



KSI Teachers Dispatched Overseas (as of Dec. 2022)

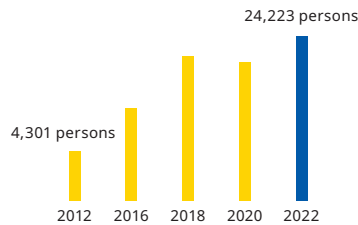


61 countries
133 institutes

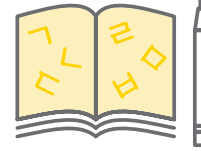


Sejong Culture Academy Operation Status (as of Dec. 2022)

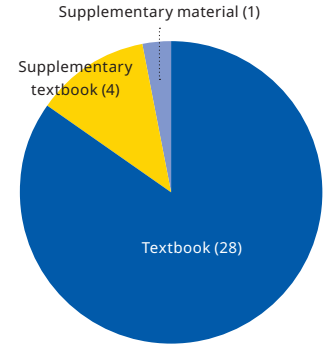
22 countries
41 institutes
24,223 persons



KSI Educational Materials (as of Dec. 2022)



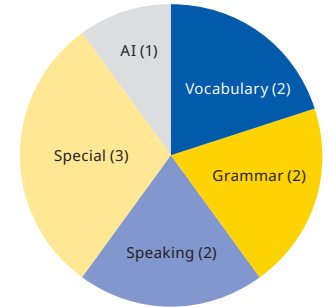
33 types



KSI Smart Learning Content (as of Dec. 2022)



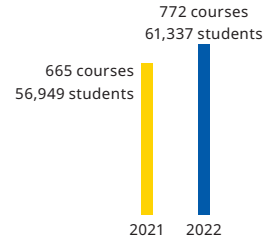
10 types



Online KSI Courses and Students (as of Dec. 2022)



772 courses
61,337 students



Major KSIF Events (as of Dec. 2022)



World Korean Educator Conference
14 times

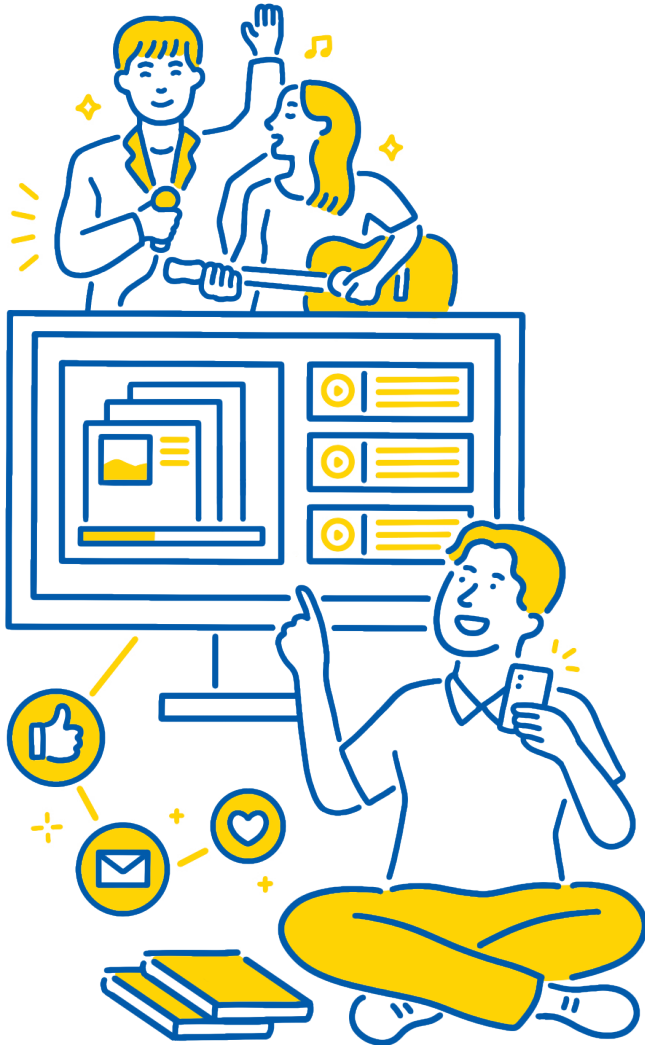
KSI Invitational Training for Outstanding Students
13 times

KSI Speaking & Writing Contest
9 times

KSI Regional workshops
10 years

* Speaking and writing have been merged as one contest since 2019.

The KSIF supports KSIs all over the world.



Appointment of KSI Ambassadors

We appoint persons who represent Korean culture and art as KSI ambassadors to help promote KSI to people who are interested in Korean language and culture.

Promotion of KSIs

We introduce KSIF and KSI to the press and media, and provide clippings of new articles about Korean language and culture.







Publication of Periodicals

We collect stories of the KSIF and KSIs all around the world, and share them by publishing annual magazine, and issuing monthly online newsletters.



Social Media Channels

We actively communicate with people all around the world who are interested in Korean language and culture through social media.

	Blog	blog.naver.com/nurisejong
<hr/>		
	YouTube	youtube.com/LearnTeachKorean
<hr/>		
	Instagram	instagram.com/king.sejong.institute
<hr/>		
	Facebook	facebook.com/Sejonghakdang.org
<hr/>		
	Weibo	weibo.com/onlinesejong
<hr/>		
	TikTok	www.tiktok.com/@king.sejong.institute

The KSIF supports global citizens to learn and love Korean language and culture.

Major Contributions

KSIF Events

Sponsors provide support for major events held by the KSIF such as the “Korean Cultural Experience Program for KSI Learners” as well as the “KSI Writing and Speaking Contest.”



KSI Students

Sponsors provide scholarships and allowances to KSI students during their study in Korea.



KSI Establishment

Sponsors work with the KSIF to establish company-affiliated KSIs overseas.



KSI Learning Materials

Sponsors provide textbooks and learning materials to facilitate the smooth operation of KSIs.

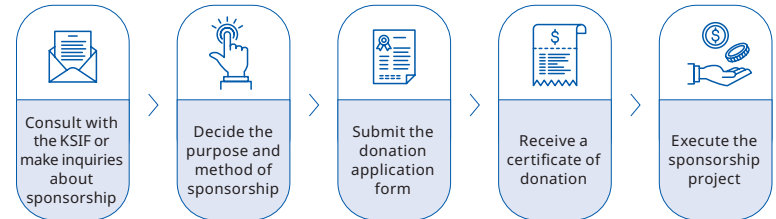


* The KSIF is open to other forms of Contributions designed to promote Korean language and culture overseas, and determines implementation through a collaborative review.

Types of Contributions

General Donation	Donors make donations to the KSIF without specifying their desired purpose.
Specific Donation	Donors make donations to the KSIF by specifying particular purposes, such as location, target group or project within the scope of the KSIF's original purpose.

Procedure



Contact: tae0@ksif.or.kr

Major Sponsors



FAQ

Q. What is the difference between the KSIF and KSI?

- A. The KSIF is a public institution that operates under the auspices of the Ministry of Culture, Sports and Tourism, and KSI is a major brand of the KSIF that teaches Korean language and culture. The KSIF is responsible for designating and managing KSIs all over the world.

Q. Where are KSIs located?

- A. You can find KSIs all over the world. As of June 2023, there are 248 KSIs in 85 countries where there is a demand for Korean language and cultural education. The KSIF is headquartered in Seoul, Republic of Korea, and it manages and supports KSIs all over the world.

Q. I am not Korean. I would like to study Korean language at a KSI. What should I do?

- A. Visit the official KSIF website to see the locations and current status of KSIs all over the world. (Visit www.ksif.or.kr > [Responsibilities] > [KSIs Worldwide] > search by continent/country)

Please contact the KSIF for more information on how to enroll in a KSI. If you are unable to attend a KSI in person, you can also enroll in online KSI courses to learn Korean. You can take an online Korean course that is most appropriate for your current skills level after taking an online test.
(Visit www.iksi.or.kr > [Online Level Test] > Enroll in an online Korean course)

Q. What does each division in KSIF do?

- A. KSIF comprises three divisions.
- Management and Planning Division: Handles matters related to the operation of KSIF, and promotes and supports KSIs.
 - King Sejong Institute Business Division Designates and manages KSIs, dispatches Korean teachers, and operates scholarship programs for students, etc.
 - Content Business Division: Develops curricula and textbooks, manages the online platform, and executes Sejong Korean language Assessment (SKA), etc.

Q. Does the KSIF have an overseas office?

- A. Yes, it does. The KSIF operates KSI centers in the US, Vietnam, Indonesia, and France.



세계 세종학당재단
King Sejong Institute Foundation

7F, 11F, 12F, 22 Banpo-daero, Seocho-gu, Seoul, Republic of Korea
+82-2-3276-0700
www.ksif.or.kr

Operation of King Sejong Institute



- I King Sejong Institute Foundation
- II Operation of King Sejong Institute**
- III Education of King Sejong Institute
- IV Educational Content of King Sejong Institute Foundation

The KSIF is creating a world where everyone dreams through Korean language and culture.



4 KSIs AROUND THE
WORLD

6 OPERATION OF THE KSIs

8 SUPPORT FOR THE KSIs I

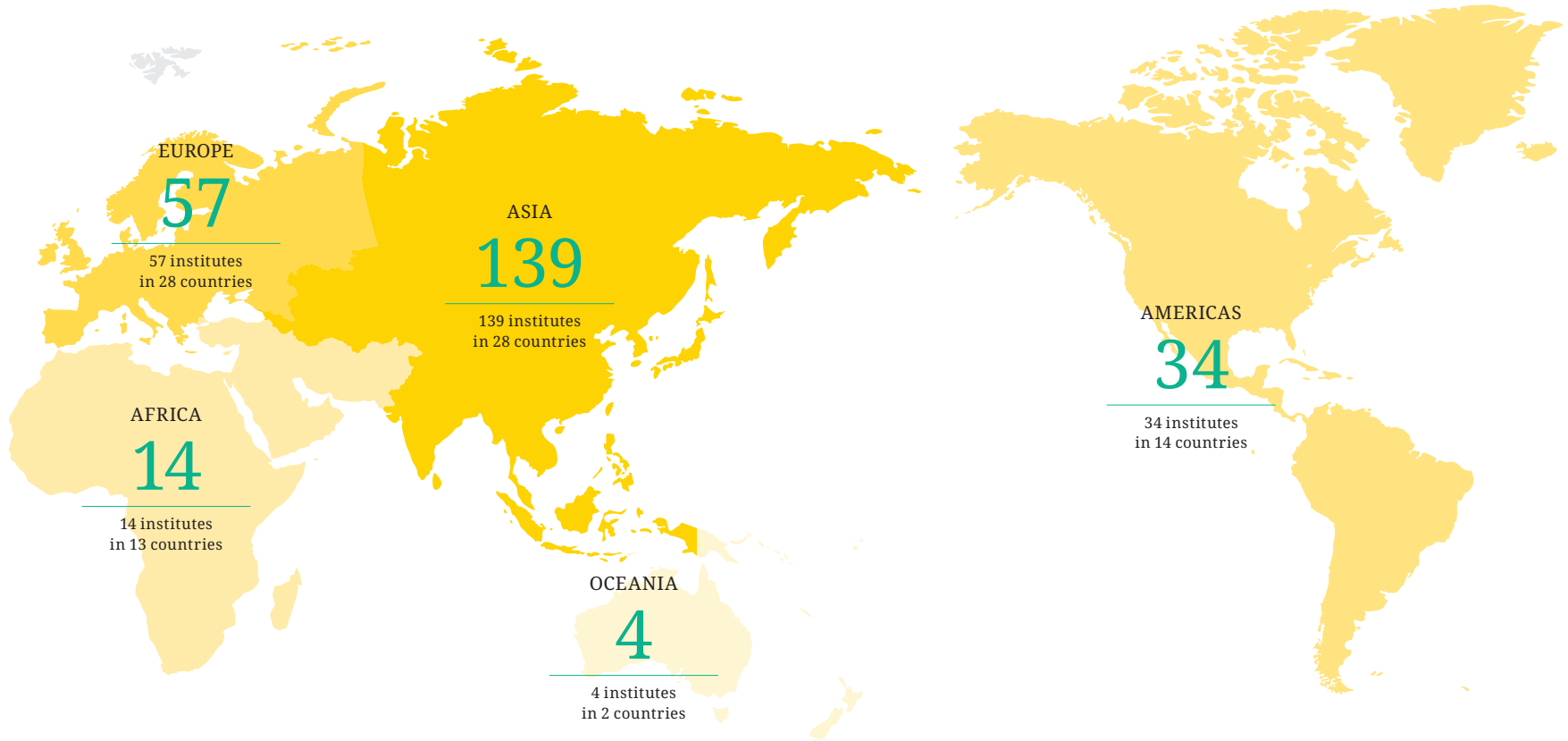
10 SUPPORT FOR THE KSIs II

12 DIVERSE SCHOLARSHIP
OPORTUNITIES

14 ESTABLISH THE KSI
NETWORK

The KSIF has a global network of 248 institutes in 85 countries.

(as of Jun. 2023)



- EUROPE** Denmark(1), Germany(3), Latvia(1), Russia(11), Romania(1), Luxembourg(1), Lithuania(2), Belgium(2), Bulgaria(1), Serbia(1), Sweden(1), Spain(3), Slovakia(1), Slovenia(1), Iceland(1), Estonia(1), UK(4), Austria(1), Ukraine(1), Italy(1), Czechia(1), Croatia(2), Türkiye(4), Portugal(1), Poland(2), France(4), Finland(1), Hungary(3)
- ASIA** Republic of Korea(1), Laos(2), Malaysia(3), Mongolia(4), Myanmar(1), Bahrain(1), Bangladesh(2), Vietnam(23), Saudi Arabia(1), UAE(4), Azerbaijan(2), Jordan(1), Uzbekistan(7), Iran(2), India(7), Indonesia(11), Japan(16), China(21), Kazakhstan(3), Cambodia(5), Kuwait(1), Kyrgyzstan(5), Tajikistan(2), Thailand(5), Turkmenistan(1), Pakistan(1), Palestine(1), Philippines(6)
- AFRICA** Nigeria(1), South Africa(1), Madagascar(1), Malawi(1), Morocco(2), Botswana(1), Eswatini(1), Uganda(1), Egypt(1), Kenya(1), Cote d'Ivoire(1), Tanzania(1), Tunisia(1)
- OCEANIA** New Zealand (1), Australia (3)
- AMERICAS** Mexico(2), US(14), Bolivia(1), Brazil(5), Argentina(1), Haiti(1), Ecuador(1), El Salvador(1), Uruguay(1), Chile(1), Canada(3), Colombia(1), Paraguay(1), Peru(1)

The KSIF designates and manages KSIs all over the world.

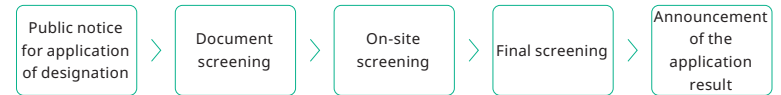


Designation of New KSIs

The KSIF designates KSIs all over the world so that people who want to learn Korean can access Korean and Korean culture more easily in their home countries.

Designation Procedure

A new KSI is designated according to the following procedure.



* The details of the schedule and procedure are subject to change.

Types of KSI

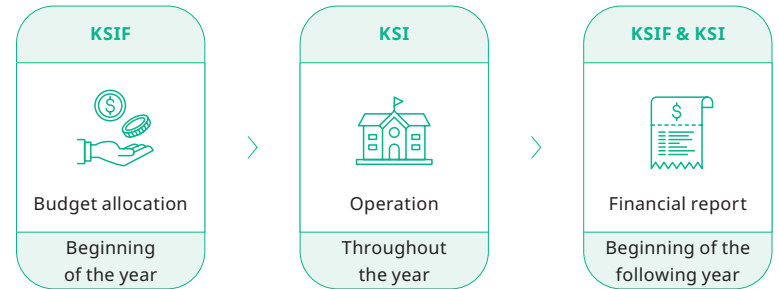
General KSI	<p>Operated by support funds from domestic/international government agencies, local municipalities, Korean undergraduate/graduate schools, and non-profit organizations</p> <ul style="list-style-type: none"> - Direct: KSIs operated by local organizations outside Korea - Joint: KSIs operated by local organizations and Korean organizations through a MOU
Collaborative KSI	Operated without receiving support funds by municipalities, overseas Korean government agencies, non-profit organizations under the Act on the Management of Public Institutions, and private companies
KSI Center	KSIs directly established by the KSIF in order to set the standard for other KSIs, and supervise other KSIs in the region
KSI Korean Cultural Center & Korean Education Center	KSIs operated by the Korean Culture Center and Korean Education Center to provide Korean language courses under the same brand of KSI

The KSIF supports the stable operation of KSIs and the education of Korean language and culture.



Support for Budget Operation for KSIs

The KSIF allocates budgets to KSIs by considering the size of the institute and the cost of living in the country to facilitate efficient operation of KSIs.



Dispatch of Korean Language Teachers

The KSIF dispatches licensed Korean language teachers to KSIs all around the world in order to narrow the gap in education between different regions, and provide high quality Korean language education at all KSIs.

Educational Courses of Korean Language and Culture

The KSIF provides the basic curriculum for all KSIs to ensure consistency in the Korean language education across different KSIs in the world, and runs the Korean culture program called Sejong Culture Academy.

Textbooks and learning materials on Korean language and culture

The KSIF develops textbooks and teaching materials on Korean language and culture that are used at KSIs.



The KSIF support the operation of KSIs based on the unique characteristics of the country and learning environment.



KSIF Specialization Project

The KSIF runs unique Korean language and cultural programs customized to the characteristics of each country.



Online Korean Language and Cultural Courses

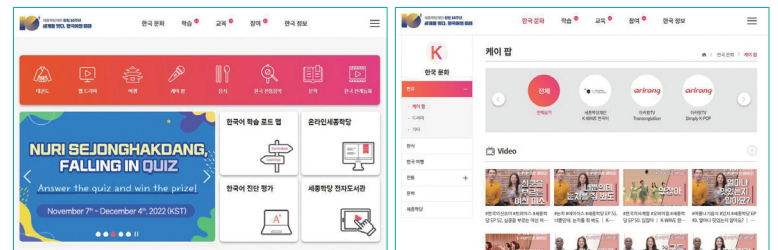
- Online KSI (www.iksi.or.kr)

The KSIF runs a platform where students can listen to online lectures anytime, anywhere.



- Nuri Sejonghakdang (nuri.iksi.or.kr)

The KSIF provides educational materials such as textbooks and teaching materials that are essential for learning Korean language and culture.



The KSIF offers opportunities to study in Korea for students with excellent Korean proficiency.



KSI Speaking & Writing Contest

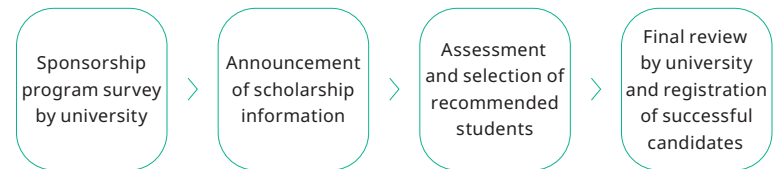
The KSIF hosts the KSI Speaking & Writing Contest every year to create an extra source of motivation for KSI students.

Those who achieve excellent results in the contest are offered opportunities to study at a Korean university.



Scholarships for KSI Students

In every first/second half of the year, Korean universities provide current KSI students or graduates with opportunities to undertake a course and language program in Korea as well as scholarships that cover the tuition fees and part of boarding fees.



The KSIF gathers Korean educators and provides venues for exchanges.



World Korean Educator Conference

The KSIF invites global Korean language educators to Korea to share the latest Korean language teaching practices, case studies, and various teaching methodologies for Korean language and cultural education to strengthen professional competencies.

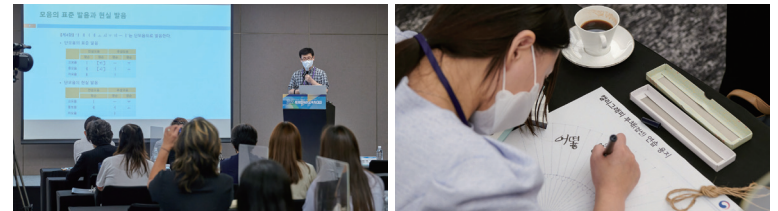
· General Training

Special lectures on the latest practices in Korean language education overseas and model cases are shared.



· Korean Language and Cultural Training

Theoretical and practice training are given to strengthen Korean language teachers' competencies related to Korean language and culture.



KSI Regional Workshops

The KSIF devices ways to facilitate cooperation between local KSIs and officials from Korean education agencies, and ways to develop Korean language education in the region.



FAQ

Q. I would like to run a KSI. What should I do?

A. The KSIF starts to receive applications for new KSIs in November each year. Visit the KSIF website (www.ksif.or.kr) to check the announcement. Organizations that wish to run KSI should submit a designation application to KSIF to be able to open an official KSI through a review. KSI is a brand that is directly operated by the Korean government, and represents Korean language and cultural education. Applications from individuals and organizations who wish to run a KSI for for-profit purposes will not be accepted.

Q. How many types of KSI are there?

A. There are four types of KSI.
(i.e. General; Collaborative; Center; and Culture/Education Center-run)

Q. What are the differences between the different types of KSI?

A. ① General KSI is the most common type of KSI. There are standard KSIs (independent KSIs) that are run directly by local organizations and collaborative KSIs that are jointly run by local organizations and ROK organizations. Standard KSIs are run by support funds provided by the KSIF.
② On the contrary, collaborative KSIs are run by municipalities, overseas Korean government agencies overseas, public agencies, private companies, and non-profit organizations without receiving any funds from the KSIF.
③ KSI center function as overseas offices for the KSIF and are directly established and operated by the KSIF in order to set a good example for other KSIs.
④ Korean language courses provided by Korea Culture Centers (under the Ministry of Culture, Sports and Tourism) and Korea Education Centers (under the Ministry of Education) overseas have been integrated into a single brand of KSI. The KSIF dispatches KSI teachers to Korea Culture Centers and Korea Education Centers, and those KSIs operated by Korea Culture Centers and Korea Education Centers also use the same basic KSI curriculum.

Q. What is the organizational structure of KSI?

A. KSI consists of the director responsible for the overall operation of the institute, operational personnel in charge of operating staff, and teaching staff who give Korean language and cultural classes. KSI teaching staff is divided into two types: dispatched teachers who are sent by the KSIF to overseas KSIs, and local teachers who are hired directly by KSIs.

Q. Are all KSI courses free?

A. Tuition fees for KSI courses vary between individual KSIs. According to the KSIF Management Policy, KSIs can charge tuition fees to students within the legal boundaries of the host country.

Q. Who are the target students for KSIs?

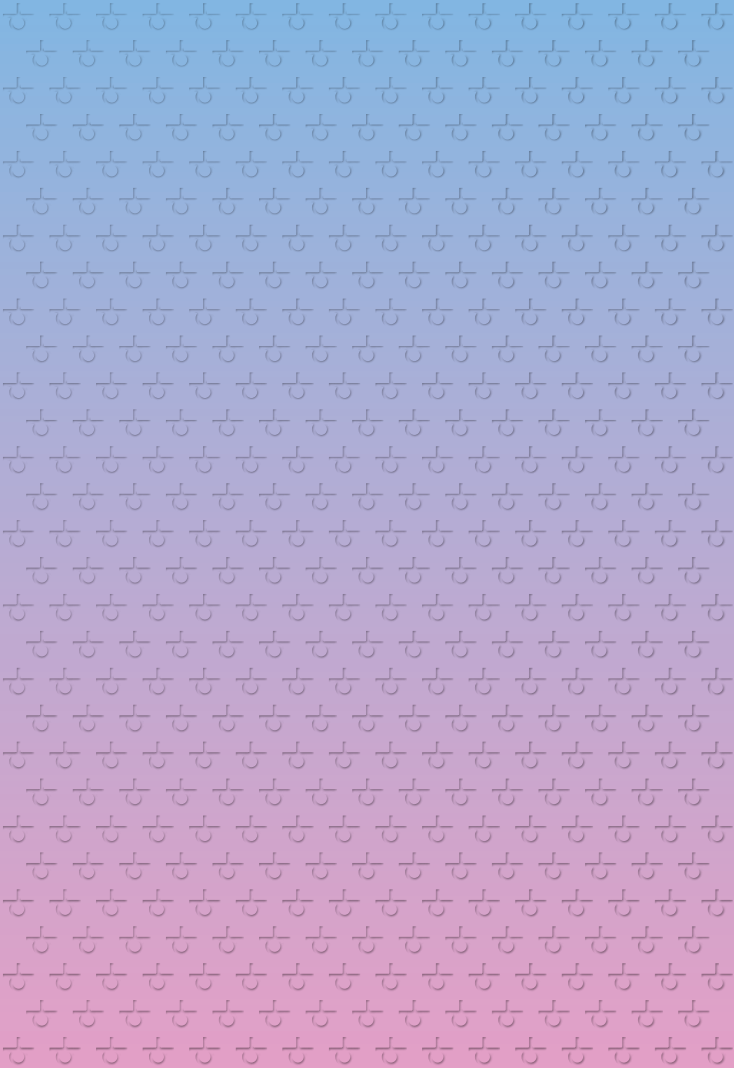
A. The target students are local adults who want to learn Korean as a foreign language or second language.



세계 세종학당재단
King Sejong Institute Foundation

7F, 11F, 12F, 22 Banpo-daero, Seocho-gu, Seoul, Republic of Korea
+82-2-3276-0700
www.ksif.or.kr

Education of King Sejong Institute



- I King Sejong Institute Foundation
- II Operation of King Sejong Institute
- III Education of King Sejong Institute**
- IV Educational Content of King Sejong Institute Foundation

The KSIF is creating a world where everyone dreams through Korean language and culture.



4 KSI CURRICULA

6 TEXTBOOKS AND
LEARNING MATERIALS

8 DISPATCH KOREAN
LANGUAGE TEACHER

10 TRAINING KOREAN
LANGUAGE TEACHER

12 SUPPORT FOR KOREAN
CULTURE EDUCATION

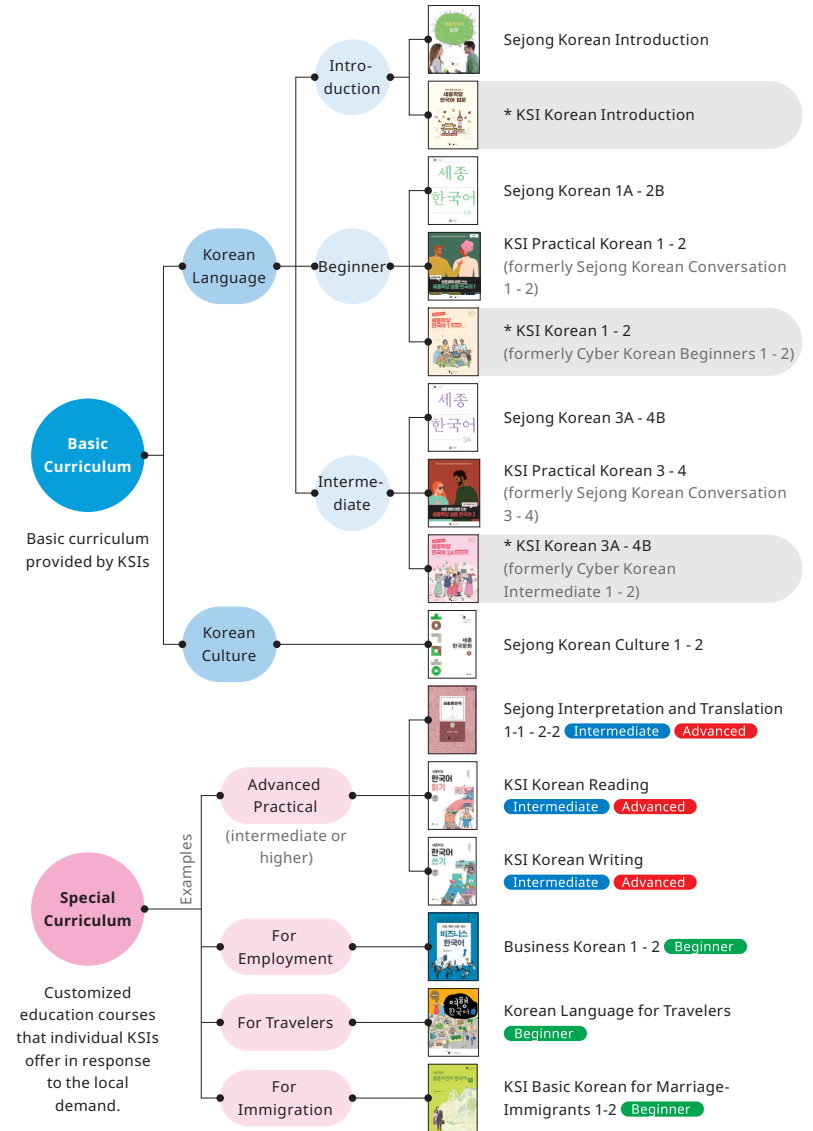
14 INVITE OUTSTANDING
KSI STUDENTS

The KSIF provides standardized curricula for all KSIs across the world.



Curricula

The KSIF develops curricula to ensure that all KSIs provide standardized education. KSI students can learn Korean language and culture with the same standard and efficiency anywhere in the world.



* Can be used in Online KSI (the standard textbook for online and face-to-face courses)

Textbooks

Textbooks for Basic KSI curriculum

• **Sejong Korean 1A - 4B**

This textbook is used by KSI that is designed to improve the comprehensive communication skills for Korean learners outside Korea.



• **KSI Practical Korean 1 - 4**

This textbook is focused on speaking and listening to improve the practical communication skills for Korean learners outside Korea.



• **KSI Korean for Introduction**

This textbook is designed to help students learning Korean for the first time learn Hangeul consonants and basic words. (Can be used for Online KSI course, 'Cyber Korean Introductory')



• **KSI Korean 1 - 4B**

This textbook is designed to help beginner and intermediate level Korean learners improve their communication skills. (Can be used for Online KSI course, 'Cyber Korean Beginner and Intermediate')



• **Sejong Korean Culture 1 - 2**

This textbook helps students learn Korean culture in a fun and friendly way.



Textbooks for Special KSI curriculum



• **KSI Korean Reading**

This textbook is designed to help intermediate and advanced Korean students improve their reading skills using texts from five areas, including society, literature, science, economy, and history.



• **Korean Language for Travelers**

This textbook helps students learn Korean culture as well as expressions that travelers can encounter in various situations.



• **KSI Korean Writing**

This textbook is designed to help intermediate and advanced Korean students improve their vocabulary, learn new expressions, and practice their writing skills in five areas, including society, literature, science, economy, and history.



• **Business Korean 1 - 2**

This textbook is designed to help students learning Korean for employment purposes learn expressions that can be useful in business settings.



• **Sejong Interpretation and Translation 1-1 - 2-2**

This textbook is designed to help intermediate and advanced Korean students practice their translation and interpretation skills (from Korean to local languages, and vice versa) using general and specialist topics.



• **KSI Basic Korean for Marriage-Immigrants 1 - 2**

This textbook is designed to help people who are moving to Korea through marriage learn useful expressions that can be used in Korea and improve their understanding of the Korean society.

* Available in 12 languages (English, Vietnamese, Burmese, Indonesian, Thai, Hindi, Russian, Uzbek, Kazakh, Kyrgyz, Chinese, Mongolian)

Learning Materials

Supplementary materials that can facilitate effective learning and teaching of Korean language and culture.



• **KSI Korean Word Cards**

A teaching material that presents basic Korean words in the form of word card for effective learning.



• **KSI Korean Posters**

A large image where basic Korean words are grouped by topic. It can be attached on the wall.



• **Korean Basic Vocabulary Learning**

An elementary and intermediate vocabulary dictionary designed to help students learn Korean by themselves.

(contains 5,039 words)
* Available in 9 languages (English, Chinese, Japanese, Russian, Vietnamese, Indonesian, French, Mongolian, Thai)



• **KSI Korean Culture Cards**

Culture cards that consist of Korean traditional and modern culture, food, and tourist destinations.

* Front: Images of actual Korean culture; Back: Related information



The KSIF dispatches licensed Korean language teachers to KSIs overseas.



Dispatched KSI Teachers

The KSIF dispatches licensed Korean teachers to KSIs that need qualified Korean teachers. The dispatched Korean teachers work in the local KSIs, providing the KSI curriculum, developing educational materials, and re-training the KSI teaching staff in the region.

Qualifications of Dispatched Teachers

A Level

Holds a Korean teaching license (level 2 and higher)
Completed at least a master's degree in Korean education and the related field
Has practical Korean teaching experience of at least 8 years (3,200 hours)

B Level

Holds a Korean teaching license (level 2 and higher)
Has practical Korean teaching experience that is at least 3 years (1,200 hours) and no more than 8 years (3,200 hours)

C Level

Holds a Korean teaching license (level 3 and higher)
Has practical Korean teaching experience that is at least 1 year (400 hours) and no more than 3 years (1,200 hours)

D Level

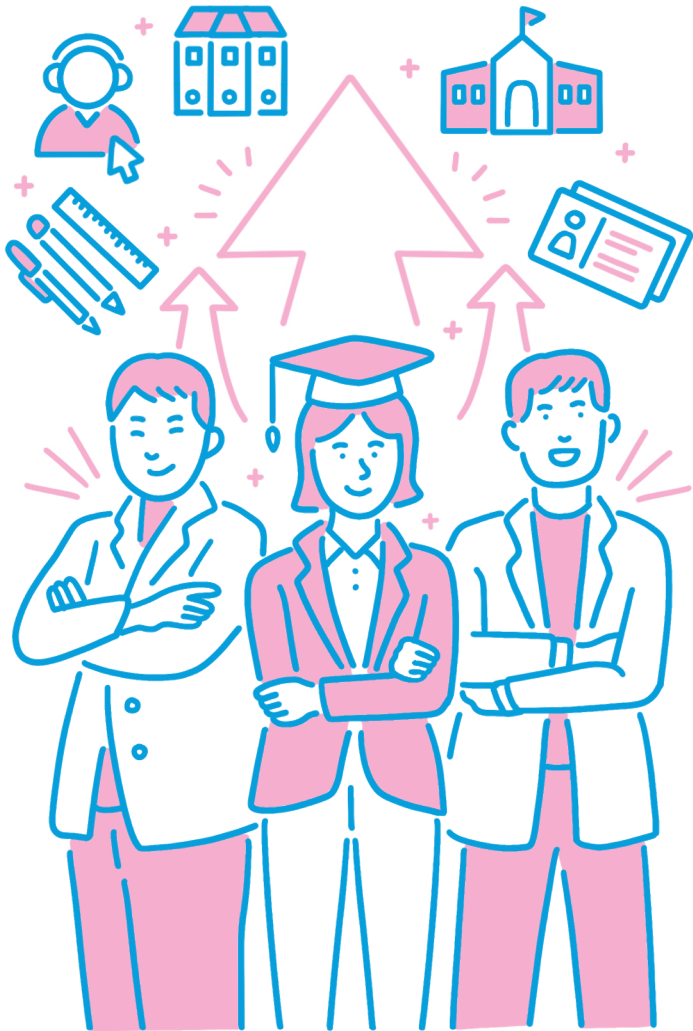
Holds a Korean teaching license (level 3 and higher)
Has practical Korean teaching experience that is no more than 1 year (400 hours)

Selection Process



Contact: korean_teacher@ksif.or.kr

The KSIF supports the continuous growth of Korean language teachers and seeks ways to strengthen their capabilities.



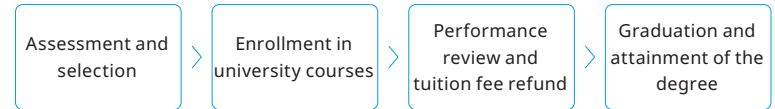
KSIF Teacher Training Centers

The KSIF provides a range of custom training programs, including pre-dispatch training for newly selected Korean teachers, advanced training for current KSI teaching staff, and online re-training programs. The KSIF revitalizes Korean education offered by KSIs by strengthening capabilities of KSI teachers.



Help KSI Teachers Attain a Degree in Korean Education

The KSIF helps local Korean teachers at KSIs attain a degree in Korean education and Korean teaching license by facilitating enrollment in online university courses and subsidizing tuition fees.



Training Programs for KSI Teachers

In order to create a sustainable Korean education environment for KSIs, the KSIF provides Korean teacher training courses for local Korean teachers at KSIs and future Korean teachers.



Consulting Services on Korean Education to Local KSI Teachers

KSIF provides 1:1 custom consulting service such as standard Korean pronunciation to help local teachers improve their strengths and capabilities as non-native Korean speakers.

The KSIF promotes various Korean cultures and provides materials that help students experience Korean culture.



Sejong Culture Academy

The KSIF runs Sejong Culture Academy, which is a high quality culture dissemination program that integrates Korean cultural education and experience. The KSIF dispatches experts in Korean culture from different fields to help local students experience and understand various aspects of Korean culture in a systematic manner.



Dispatch of KSI Culture Interns

The KSIF works together with Korean universities to dispatch students who major in culture and art to KSIs as interns. The KSIF also supports the establishment of Korean culture classes related to K-pop, taekwondo, Korean films, dramas, and traditional music.



Korean Culture Experience Materials

The KSIF provides KSIs with educational materials that help students experience Korean culture more closely.



The KSIF invites outstanding KSI students to provide opportunities to explore Korean culture.



Experience Programs

The invited students experience a variety of Korean culture, exploring K-wave culture contents, cultural assets and historic sites.



Learning Programs

Students learn various aspects of Korean culture, including samulnori, K-pop, taekwondo, and traditions.



Special Programs

The KSIF hosts the final stage of the KSI Speaking & Writing Contest.



FAQ

Q. I want to be dispatched to a KSI as a Korean language teacher. What should I do?

A. The KSIF recruit Korean language teachers to be dispatched to KSIs in the first and second half of each year. The number of teachers and location are determined by the local demand. Applicants must hold a Korean teaching license (levels 1 to 3). For more information, please visit the KSIF website (www.ksif.or.kr > [Recruitment]).

Q. I am a current teacher. Can I choose the country that I will be dispatched to?

A. Yes, you can. Applicants can select one of the KSIs that are seeking to fill vacancies at the time of application. However, different KSIs in different countries would need Korean teachers during each application period. In addition, applicants must satisfy the visa conditions required by each host country. Please check the recruitment notice on the official KSIF website for more accurate information.

Q. What kind of Korean culture class can I take at KSI?

A. The KSIF supports the establishment of Sejong Culture Academy, which offers custom Korean culture classes, by reflecting the local demand in each KSI. In addition, the KSIF works with organizations specializing in Korean culture and universities to dispatch those who studied Korean culture and art to KSIs overseas.

Q. What are “Korean Cultural Experience Program for KSI Learners” and “KSI Speaking & Writing Contest” held by the KSIF?

A. The KSIF hosts the “King Sejong Institute Invitational Training for Outstanding Students” by inviting KSI students who are entering the main competition for the KSI Speaking & Writing Contest. In the beginning of each year, individual KSIs hold a tryout for the KSI Speaking & Writing Contest, and select those students who will enter the main competition. The KSIF then invites the selected students to Korea, and provide opportunities to experience Korean language and culture for about a week. On the last day of the program, the KSIF holds the final stage for the KSI Speaking & Writing Contest.

Q. What scholarship programs does KSIF offer?

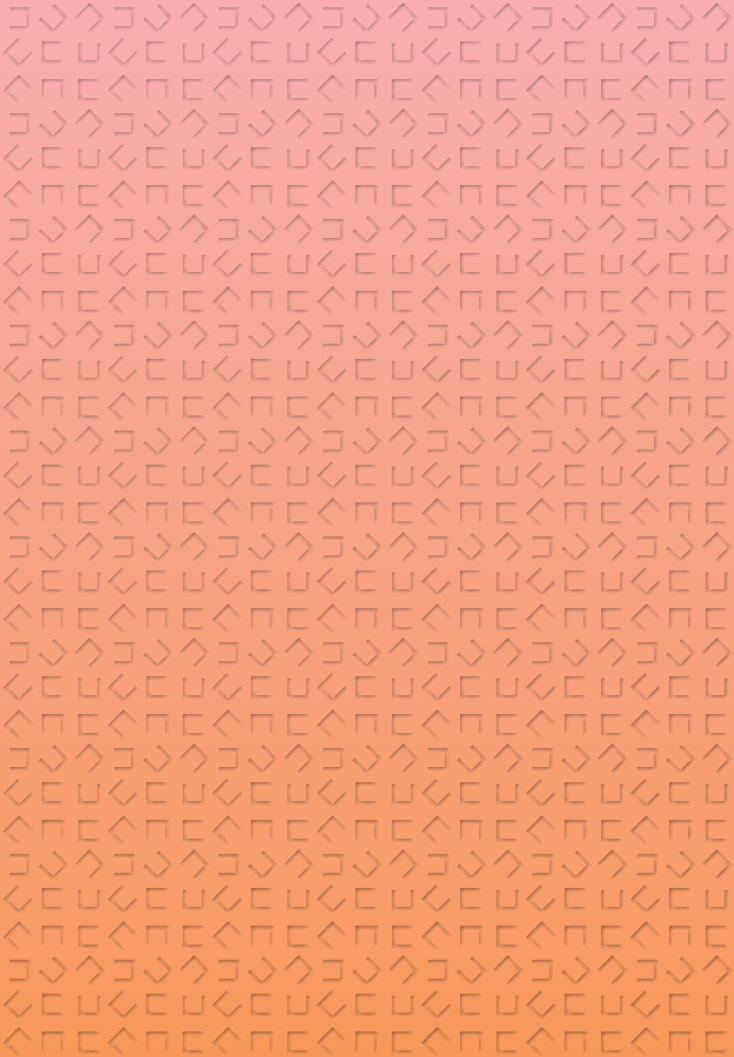
A. Each year, the KSIF provides the final contestants of the KSI Speaking & Writing Contest an opportunity to undertake a Korean language course at a Korean university. In addition, the KSIF recruits KSIF scholarship recipients through donations from Korean universities and organizations. Depending on the available scholarship budget, the KSIF subsidizes the enrollment fees and tuition fees for the scholarship recipients so that they can attain a degree from the partner Korean universities and complete a language course.



세계 세종학당재단
King Sejong Institute Foundation

7F, 11F, 12F, 22 Banpo-daero, Seocho-gu, Seoul, Republic of Korea
+82-2-3276-0700
www.ksif.or.kr

Educational Content of King Sejong Institute Foundation



- I King Sejong Institute Foundation
- II Operation of King Sejong Institute
- III Education of King Sejong Institute
- IV **Educational Content of King Sejong Institute Foundation**

The KSIF is creating a world where everyone dreams through Korean language and culture.



4 ONLINE KSI

6 NURI SEJONGHAKDANG

8 METAVERSE KSI

10 ONLINE LEARNING
CONTENTS

12 SMART LEARNING
CONTENTS

14 SEJONG KOREAN
LANGUAGE ASSESSMENT

The KSIF operates Online King Sejong Institute, an online education platform for Korean language and culture.



About

Online King Sejong Institute is an online learning platform which enables students to learn Korean language and culture without time and space constraints.



Visit website

Main Features



Students can learn Korean anytime, anywhere.



Students can take an online test to find out the most suitable course for their current level of Korean proficiency.



Students can take a range of Korean language courses for different skill levels, from beginners to intermediate.



Students can receive 1:1 online feedbacks from the teaching staff.

Curriculum

King Sejong Institute e-Class

It is a course curriculum for local KSI students. KSI teachers all around the world manage the students' learning process by customizing to the unique characteristics of individual KSI.

Cyber Korean Language Course

It is an education course for standard online Korean language course takers. Teachers in charge of each course manage enrolled students, providing real-time online lectures, 1:1 feedbacks on assignments, and so on.

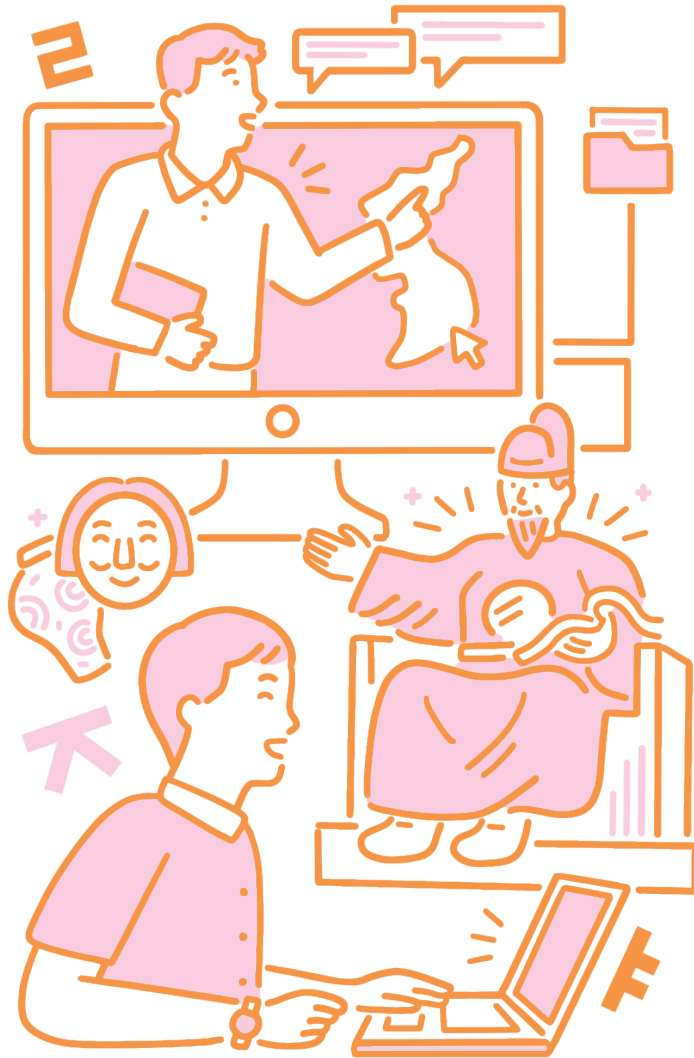
Cyber Korean Culture Course

It is an education course for standard online Korean culture course takers. Korean culture experts provide theoretical and practical lectures on K-pop, taekwondo, Korean food, and more.

Collaboration Online King Sejong Institute

It is an education course operated collaboratively by KSI and affiliated organization. It provides customized Korean language courses that reflect the characteristics of students from different organizations.

The KSIF operates Nuri Sejonghakdang in order to provide rich education materials.



About

Nuri Sejonghakdang is a portal website about Korean language and culture that students and teachers can use. It provides educational materials essential for learning and teaching Korean language.



Visit website

Main Features



You can watch various videos about Korean culture.



You can find and access various educational materials about Korean language and culture, which can be utilized in Korean language classes.



It provides textbooks and learning materials for different skill levels and learning objectives.



It provides free online training courses for Korean language teachers.

Main Content

Students	Korean Language	Textbooks and supplementary learning materials to help learn Korean language
		Previews of Online King Sejong Institute lectures
	Korean Culture	Educational videos utilizing Korean TV shows and K-Wave contents Other materials such as Korean webtoon, food, tourism, literature, etc.
	Information on Korea	General information on Korea and studying abroad in Korea
Teaching Materials	Educational Materials	Instruction manuals for educators, lecture plans, academic journals, etc.
	Community	News about Korea, teaching staff recruitment notice, information sharing, etc.
	Training Courses	Online training courses for Korean teachers at KSIs or other institutions

The KSIF operates Metaverse King Sejong Institute to welcome learners to an immersive virtual world.



About

Metaverse King Sejong Institute is a virtual space where Korean language students all over the world can gather, no matter where they are physically located, to communicate in Korean and experience Korean culture together.



Visit website

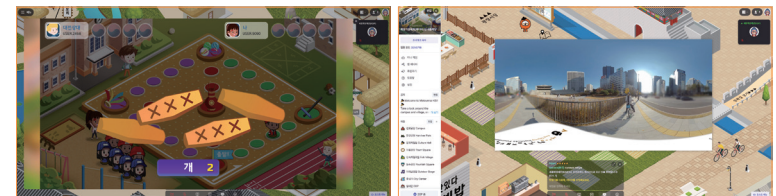


Composition

- Metaverse King Sejong Institute Campus
Improve your Korean skills by talking to Korean teachers and other students learning Korean all over the world in the metaverse.



- Metaverse Village
In Metaverse Village, you can talk to Korea supporters or other learners using expressions you learned in class, and you can experience Korean life virtually with Korean culture games and 360° VR.



The KSIF provides online learning content to help students improve the depth and breadth of their Korean language skills and knowledge in Korean culture.



Online Korean Language Learning Courses



Cyber Korean Language Curriculum

The courses are based on the international standard curriculum for Korean language education, and includes lectures, practice activities, and assignments.



Korean Language for Business

The course teaches expressions that are commonly used in business settings, including interview preparations and daily office life in Korea.



Sejong Korean Conversation Curriculum

The course uses web dramas and 1-minute briefings from news presenters to teach conversational Korean expressions that can be useful in real life.



Korean Language for Foreign Workers

It is an online Korean course that is structured around Standard Textbook for Test of Proficiency in Korean for Employment Permit System (EPS-TOPIK).

Online Content



Idol in My Living Room

It's a web drama produced by the KSIF that is about an excellent KSI student who happens to live in the same house as a Korean celebrity.



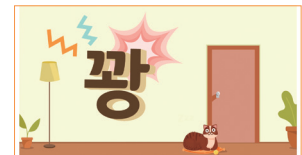
K-WAVE Korean 1, 2

It is a fun Korean learning material where students can learn Korean expressions from Korean dramas and K-pop songs together with K-pop idols.



I Know Everything About Newly Coined Words!

This learning content helps students learn buzzwords or neologisms commonly used by the Koreans in a fun and easy way through Korean TV shows.



The Sounding Words and The Moving Words

This content helps students learn onomatopoeia and mimetic words through typography motion graphics.

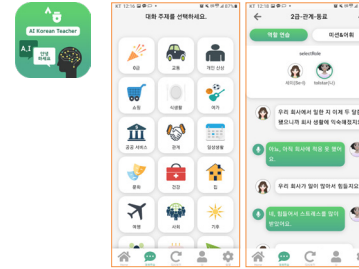
The KSIF provides a Korean learning app to help learn Korean easily on your smartphone.



AI & AR Learning App

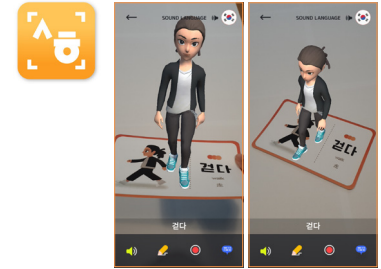
KSI AI Korean Conversation Practice Service

You can practice Korean with an AI tutor. The AI teacher supports 106 daily conversation topics, and analysis of user pronunciation.



KSI AR Korean Vocabulary Cards

You can learn Korean words using AR technology. You can access 350 Korean word cards from AR Korean word cards (ar.iksi.or.kr).



KSI Mobile Learning App

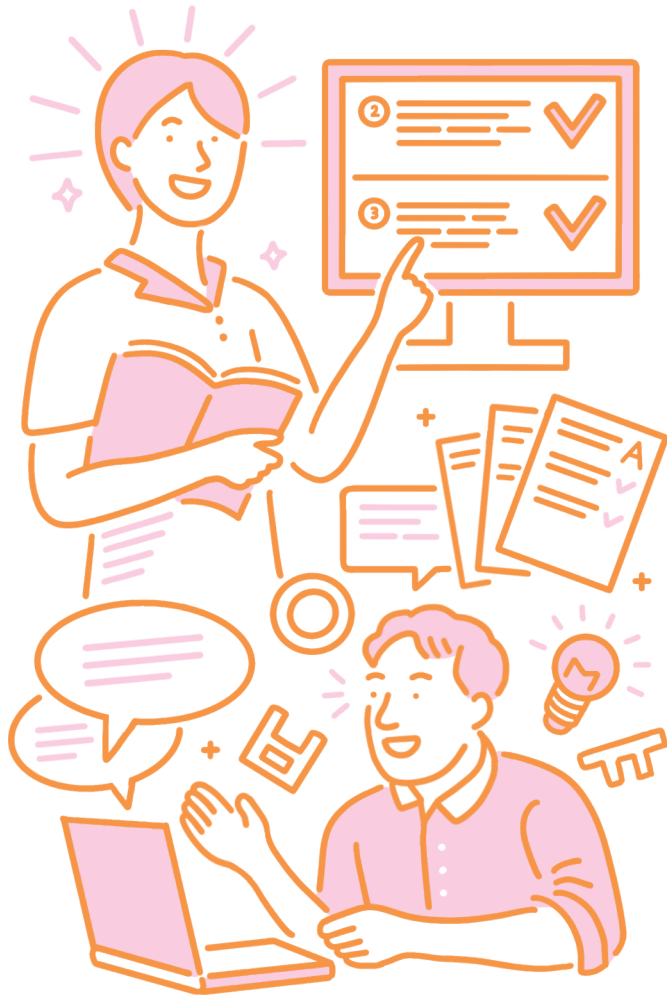
A Korean learning app based on KSI textbooks. You can practice the vocabularies, grammars, and expressions from the textbooks.

Vocabulary	 Sejong Korean Vocabulary - Beginner and Intermediate	 Sejong Korean News Vocabulary
Grammar	 Sejong Korean Grammar - Beginner	 Sejong Korean Grammar - Intermediate
Conversation	 Sejong Korean Conversation - Beginner	 Sejong Korean Conversation - Intermediate
Other	 Sejong Travel Korean	 Sejong Business Korean

Download App



The KSIF conducts its comprehensive SKA(Sejong Korean language Assessment).



Sejong Korean language Assessment (SKA)

It is a Korean proficiency test conducted by the KSIF. It is the first Korean proficiency test to have an adaptive assessment structure, which automatically adjusts the level of difficulty for the questions according to the test-taker's answers. It can be used to assess the level of Korean proficiency in a comprehensive manner, including speaking, listening, reading, and writing skills, anywhere in the world.

SKA Eligibility

- Current and future KSI students or graduates across the world



Visit Website

Types of SKA

SKA(Sejong Korean language Assessment)		iSKA(Internet Sejong Korean language Assessment)	
Test Method	Paper-based test	Test Method	Online test using an adaptive assessment method*
Questions	50 items for listening, 50 items for reading, 8 items for speaking and 5 items for writing	Questions	30 items for listening, 30 items for reading, 8 items for speaking and 4 items for writing
Test Time	170 minutes in total (50 minutes for listening, 50 minutes for reading, 20 minutes for speaking and 50 minutes for writing)	Test Time	120 minutes in total (30 minutes for listening, 30 minutes for reading, 20 minutes for speaking and 40 minutes for writing)

* The test automatically adjusts the level of difficulty for the questions based on the test-taker's Korean skills.

Special Features of SKA

- A comprehensive test that assesses the test-taker's Korean proficiency in four areas (listening, reading, speaking and writing)
- The test focuses on conversational skills and is a good indicator of the actual Korean proficiency level
- Use of the latest language assessment technology such as adaptive assessment method
- It can be used to screen high caliber migrant workers
 - For the selection of Korea National University of Arts AMA+ Scholars, POSCO TJ Park Foundation Scholars, etc.

FAQ

Q. What is the difference between Nuri Sejonghagdang and Online KSI?

A. Nuri Sejonghagdang is a portal website for Korean language students and teachers to gain access to learning materials while Online KSI is a learning platform where students can watch online Korean language classes. You can use both websites with one account.

Q. Where can I watch online KSI lectures?

A. You can watch KSI online lectures at Online KSI (www.iksi.or.kr). Online KSI is an online learning platform where anyone can learn Korean language and culture without time and space constraints. You can take an online test to find out your current level of Korean skills, and select a course that is most suitable for you.

Q. What services does Nuri Sejonghagdang offer for Korean teachers?

A. Nuri Sejonghagdang provides various educational materials that can help Korean teachers plan and prepare for their classes. Visit the website, and then go to [Guide] in the [Education] section in the menu to download an instruction manual for Korean teachers in the form of pdf file. In the [Supplementary class materials] section, you can also download word cards, posters, and culture cards that you can use in the class in the form of image file. Furthermore, the KSIF posts Korean news, Korean teacher recruitment notices, and other information worth sharing in the [Community] section in order to facilitate exchange between Korean teachers and share useful information.

Q. I would like to receive feedbacks on my Korean speaking/writing skills from Nuri Sejonghagdang. What should I do?

A. Post a recording or video (nuri.iksi.or.kr) of yourself in the [Practice speaking] section, and write a post in Korean in the [Practice writing] section to receive feedbacks from your online Korean teacher on pronunciation, intonation, vocabulary and grammar. You can practice Korean speaking and writing in the topic of your choice.

Q. What should I know about using the textbooks and materials from Nuri Sejonghagdang in terms of copyright?

A. All textbooks, learning materials and supplementary materials for class that you can find in Nuri KSI belong to KOGL Type 4. Use of KOGL Type 4 materials for commercial purposes and other secondary purposes is strictly forbidden. You must disclose the source when using any of the copyrighted materials. Please make sure to use the materials within the said boundaries. Contact Nuri Sejonghagdang at nuri@iksi.or.kr for more information on copyright.



세계 세종학당재단
King Sejong Institute Foundation

7F, 11F, 12F, 22 Banpo-daero, Seocho-gu, Seoul, Republic of Korea
+82-2-3276-0700
www.ksif.or.kr